

SALTY SISTERS SAILING

All races are to be sailed under the management of the Salty Sister race chair, the co-captain. She will determine all series scheduling, the types of racing, the courses to be sailed, the type of boats that will be used and the assignments of boat numbers and/or sail numbers. Her decisions will be based on providing the best possible sailing experiences for the most Salty Sisters.

Sailing Instructions can only be changed with a review by a Club Race Officer and Board approval.

SAILING INSTRUCTIONS

1 Racing

1.1 All races will be governed by the rules as defined in the *Racing Rules of Sailing*. If there is a conflict, the Sailing Instructions will take precedence.

2 Entries

2.1 Eligible Salty Sisters may enter by responding to the co-captain's invitation to sail.

2.2 Participants are limited to Salty Sisters or candidates for membership.

3 Notices to Competitors

3.1 Notices to competitors will be posted on the official notice board located on the inside door of the Salty Sister locker.

3.2 Courtesy emails may be sent to competitors. Failure to receive an email will not constitute a right to redress.

4. Changes to Sailing Instructions

4.1 Any change to the sailing instructions will be posted before 0810 on the day it will take effect.

4.2 Oral changes to the sailing instructions may be communicated on the water to each boat before her warning signal. The race committee will hoist an L flag, and each boat shall sail by the signal boat stern to acknowledge the change, in accordance with RRS 90.2(c).

5. Signals Made Ashore

5.1 Signals made ashore will be displayed from the flagpole located at the Sailing Center. If a postponement is signaled ashore, the warning signal will be made no less than 15

minutes after flag AP is lowered. This changes Race Signal AP

6. Schedule of Races and Class Flags

6.1 Prams in the basin: 0900 Warning, first race of the day.

6.2 Boats in the bay: 0915 Warning, first race of the day.

6.3 Class Flags. Class flags will be:

<u>Class</u>	<u>Flag</u>
Pram	White field with Optimist emblem
420	White field with red 420
Ideal 18	White field with "Ideal 18"
Sonar	White field with red Sonar emblem
Sunfish	White field with black sunfish

7. Courses

7.1 Diagrams in Appendix A show the courses, course designation, the order in which marks are to be passed, and the side on which each mark is to be left.

7.2 The RC signal boat will display the course designation no later than the warning signal.

8. Marks

8.1 Marks will be orange tomatoes or yellow or orange tetrahedrons.

9 Starts

9.2 At least five minutes before the warning signal of the first race of the day the RC will hoist its orange line flag with a sound, signaling a sequence is upcoming.

9.3 Sonars, Ideal 18s and other crewed boats will start under RRS 26.

9.4 Pram, Sunfish and 420 races may be started using a three-minute starting sequence. This changes RRS 26.

9.5 Before the warning signal of the first race of the day, each boat shall sail past the stern of the race committee signal boat on starboard tack and hail her sail number, which will be acknowledged by the race committee.

10. Recalls

10.1 The Race committee will attempt to hail on-course-side boats at the start. Delay or order will not be grounds for redress. This changes RRS 62.1(a)

11 Change of the Next Leg of the Course

11.1 To change the next leg of the course, the race committee will move the original mark to a new position. This changes RRS 33.

12. Finishes

12.1 The finishing line will be between a staff from which a blue flag is displayed on a race committee finish boat and the nearby finishing pin.

13. Protest Requirements

13.1 The protesting boat must inform the other boat at her first opportunity.

13.2 A boat is required to display a red flag if she intends to protest concerning an incident in racing. This changes RRS 60.2(a)(1)

13.3 Protest Flags shall be displayed on the boom in prams. In all other boats, the flag shall be displayed on the starboard shroud.

13.4 Protestors shall inform the race committee finish boat of their intention to protest. This changes RRS 60.2.

13.5 Protests shall be delivered to the Protest Committee representative no later than 60 minutes after Signal Boat docking time.

14 Time Limits

14.1 A boat starting later than five minutes after her starting signal will be scored Did Not Start (DNS) without a hearing. This changes RRS 63.1, A4 and A5.

14.2 Boats racing more than 10 minutes after the first boat sails the course and finishes will be scored TLE and awarded one point more than the last finisher. This changes RRS 35, 63.1, A4 and A5.

15. Scoring

15.1 The Low Point scoring system of RRS Appendix A will apply with the following exceptions:

- (a) With five or more races completed, a boat's series score will be the total of her race scores, excluding her worst score.
- (b) With seven or more races completed, a boat's series score will be the total of her race scores, excluding her two worst scores.
- (c) In a trophy series, the number of races to be scored will be determined by the trophy guidelines as specified in the SS Handbook.

15.2 A minimum of five races is necessary to constitute a series.

15.3 During a non-trophy series, a competitor may serve on the race committee or in some other administrative capacity at the direction of the Captain or Race Chair. Her points for the missed race will be equal to the average of the races she has

sailed in the series. This score will be the first score to be excluded.

16 Radio Communications and Safety

16.1 All race boats shall carry a VHF radio capable of transmitting and receiving on Channels 05, 16 and 63.

16.2 The Race Committee will use and monitor VHF Channel 63 for communications with and between regatta participants on Tampa Bay. Courtesy broadcasts on VHF Channel 63 shall not be grounds for redress. RC will monitor Channels 05, 16 and 63; 05 for prams, and 63 for crewed boats.

16.3 A boat while racing shall neither make nor receive radio transmissions not available to all boats. This restriction also applies to cell phones and all other devices receiving cellular data, only exception is described in SI 14.5.

16.4 A boat retiring from a race shall notify the race committee as soon as possible.

16.5 Life vests are required for participating in sailing.

17. Prizes

17.1

Prize places awarded

Number of teams of one or more
sailors needed to compete in at
least 50% of a series

1st, 2nd, 3rd

5 or more

1st, 2nd

4

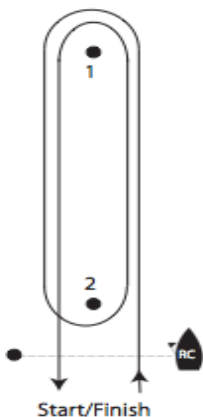
1st

3

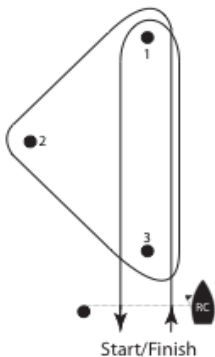
APPENDIX A

COURSES

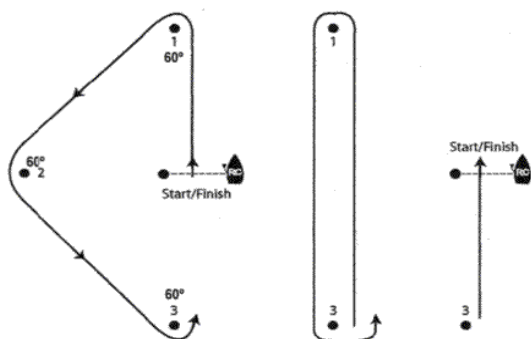
Flag W – WINDWARD–LEEWARD Start-1-2-1-Finish



Flag T – TRIANGLE–WINDWARD–LEEWARD WITH START/FINISH BELOW THE LEEWARD MARK Start-1-2-3-1-Finish



**Flag O – TRIANGLE–WINDWARD–LEEWARD
WITH START/FINISH IN THE MIDDLE
Start-1-2-3-1-3-Finish**



Boats shall not cross the Start/Finish line unless Starting or Finishing.